

**PARTS  
MANUAL**

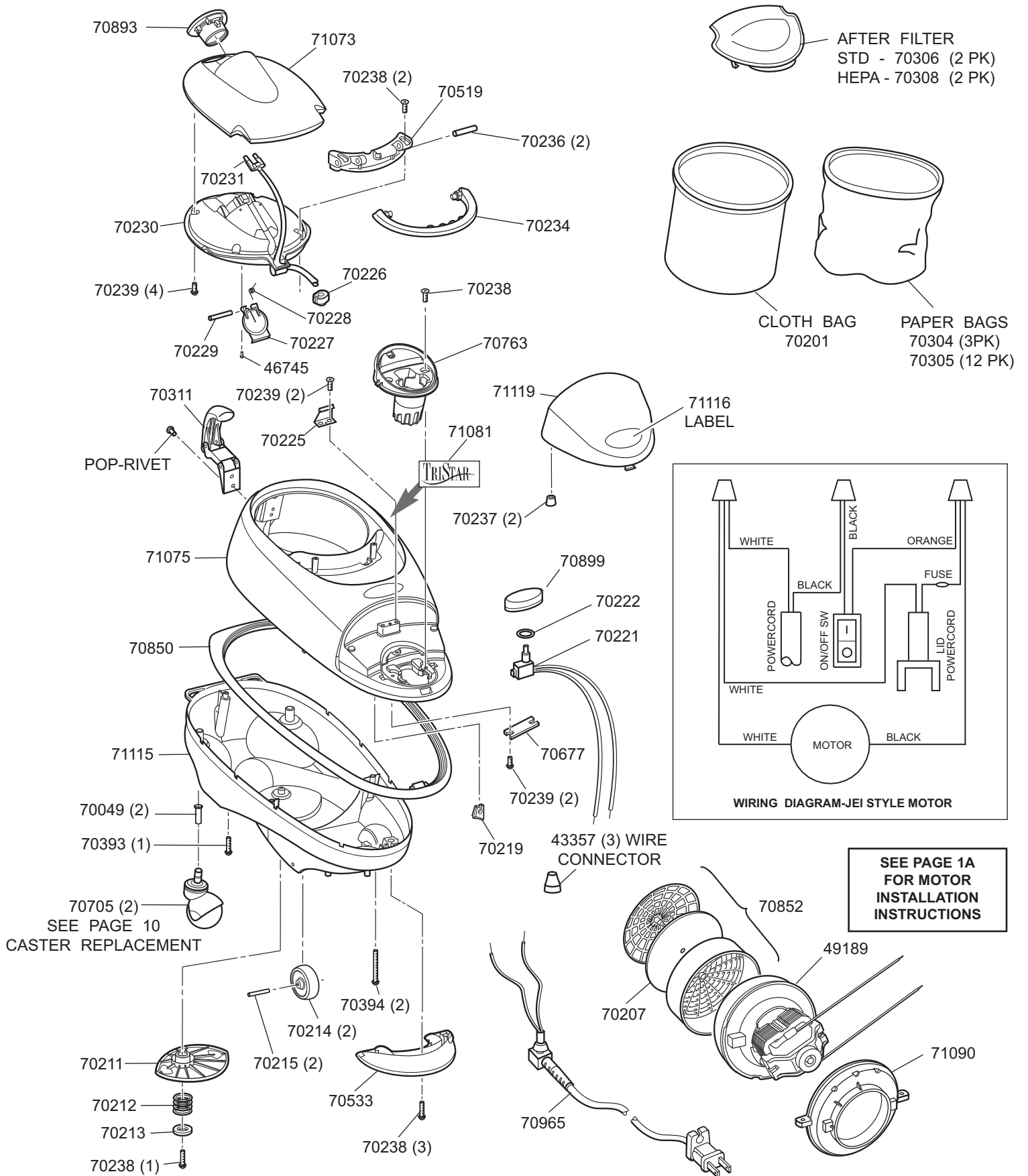
**TRISTAR™**  
★ ★ ★

**CS CANISTER**

**Model: A101S**

**ISSUED: JANUARY 2010**

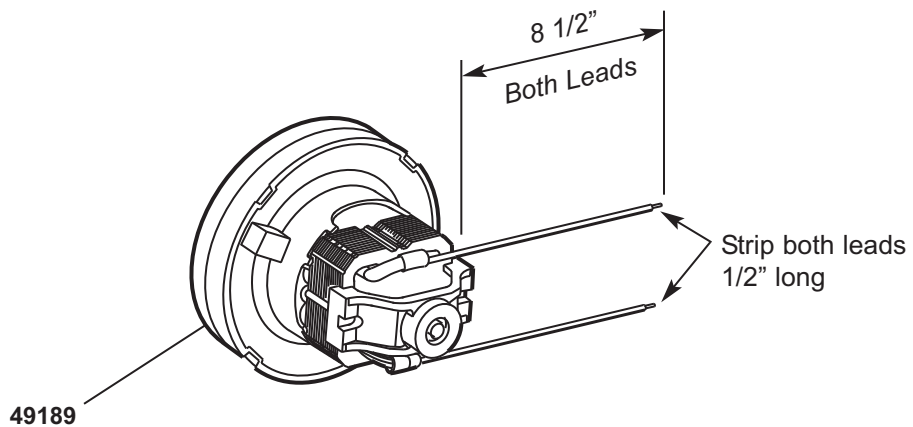
# CANISTER



**MOTOR ASSEMBLY INSTALLATION PROCEDURE**  
**(JEI STYLE MOTOR)**

**NOTE:**

WHEN REPLACING A JEI STYLE MOTOR (S/N 49189), IT WILL REQUIRE THE REMOVAL OF THE INSTALLED TERMINALS ON THE LEAD WIRES BEFORE MOTOR CAN BE USED. CUT BOTH LEADS TO 8 1/2" AS SHOWN BELOW. STRIP BOTH LEADS TO 1/2" AS SHOWN.



## **MAIN CANISTER PARTS LIST**

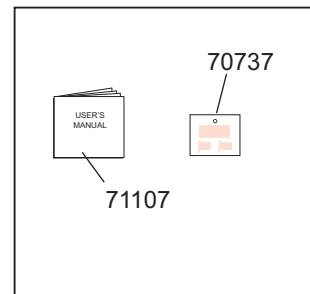
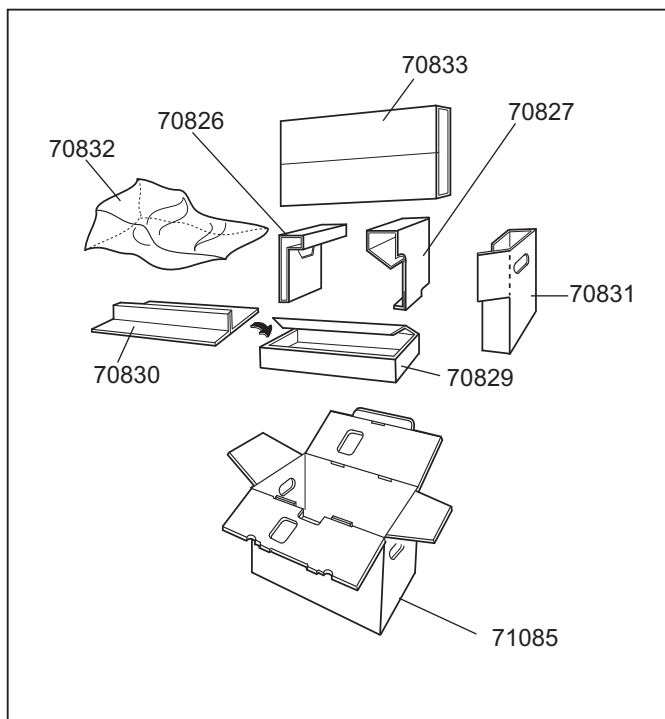
| <b><u>Order Number:</u></b> | <b><u>Description:</u></b>                             |
|-----------------------------|--|
| 71119                       | Filter Door (W/ Label)                                 |
| 70763                       | Exhaust Port   |
| 70207                       | Motor Filter - Foam                                    |
| 70965                       | Power Cord (W/2 Connectors)                            |
| 70533                       | Rear Carry Handle                                      |
| 70211                       | Cord Hook  |
| 70212                       | Coil Spring  |
| 70213                       | Washer   |
| 70214                       | Rear Wheel   |
| 70215                       | Axle (Rear Wheel)                                      |
| 71115                       | Lower Housing (W/ Casters)                             |
| 70705                       | Caster   |
| 70850                       | Bumper   |
| 70219                       | Cord Grommet   |
| 70677                       | Switch Plate   |
| 70221                       | Switch   |
| 70222                       | Rubber Washer  |
| 70899                       | Switch Button  |
| 71075                       | Upper Housing (W/ Latch Assembly)                      |
| 70225                       | Spring Latch   |
| 70226                       | Hinge Bracket Grommet                                  |
| 70227                       | Inlet Door   |
| 70228                       | Torsion Spring   |
| 70229                       | Hinge Pin  |
| 70230                       | Inlet Lid  |
| 70231                       | Lid Cord (W/ 2 Wire Connectors)                        |
| 70893                       | Inlet Port   |
| 71073                       | Lid  |
| 70234                       | Handle   |
| 70519                       | Hinge Bracket  |
| 70236                       | Hinge Bracket Pin                                      |
| 70237                       | Leg Cap  |
| 70238                       | Screw 8-32 X 5/8" (Torx)                               |
| 70239                       | Screw 8-32 X 5/16" (Torx)                              |
| 70393                       | Screw 8-32 X 1" (Torx)                                 |
| 70394                       | Screw 8-32 X 2 3/8" (Torx)                             |
| 70311                       | Latch Assembly (W/ 2 Pop-Rivets)                       |
| 71116                       | Label (Filter Door)                                    |
| 70385                       | Inline Fuse (W/ 2 Connectors) (Located On Lid Cord)    |
| 70390                       | Cable Tie  |
| 70852                       | Motor Filter Cover Assembly (Includes Filter & Covers) |
| 70049                       | Caster Sleeve  |
| 71081                       | Body Side Label (TriStar)                              |
| 49189                       | Motor Assembly   |
| 71090                       | Motor Mount  |

## MAIN CANISTER PARTS LIST

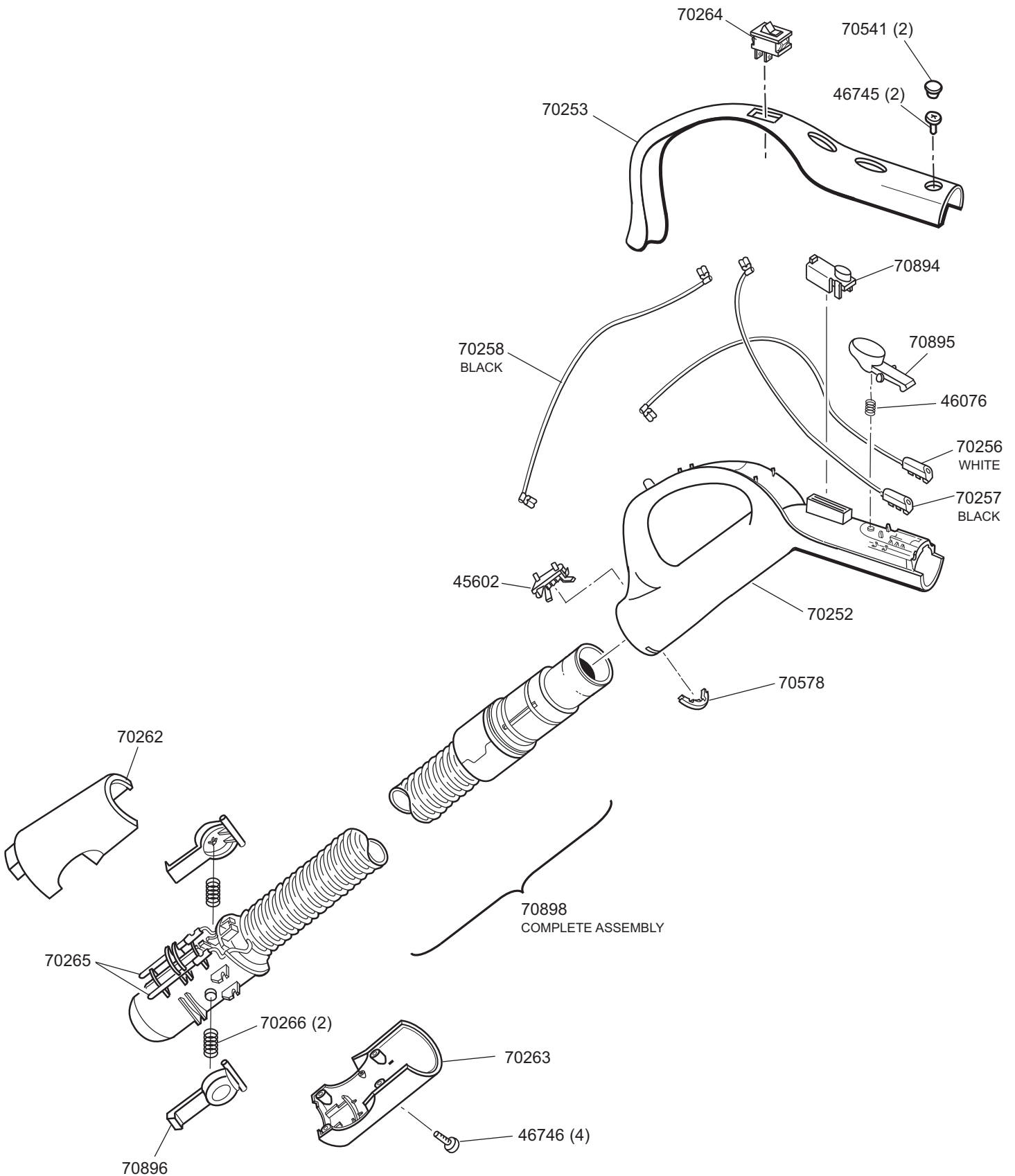
| <u>Order Number:</u> | <u>Description:</u>          |
|----------------------|------------------------------|
| 43357                | Wire Connector (3 Required)  |
| 46745                | Screw 4-20 (Torx)            |
| 70201                | Cloth Bag                    |
| 70304                | Paper Dust Bags - 3 Pack     |
| 70305                | Paper Dust Bags - 12 Pack    |
| 70306                | After Filter - Std. (2 Pack) |
| 70308                | After Filter - Hepa (2 Pack) |

## MISCELLANEOUS PARTS

| <u>Order Number:</u> | <u>Description:</u>         |
|----------------------|-----------------------------|
| 71085                | Carton                      |
| 70826                | Front Protector (Wide End)  |
| 70827                | Rear Protector (Narrow End) |
| 70829                | Accessory Tray              |
| 70830                | Tray Insert                 |
| 70831                | Protector (Power Brush)     |
| 70832                | Plastic Bag                 |
| 70833                | Hose Protector              |
| 71107                | User's Manual               |
| 70737                | Hang Tag                    |



# ELECTRIC HOSE



## **ELECTRIC HOSE PARTS LIST**

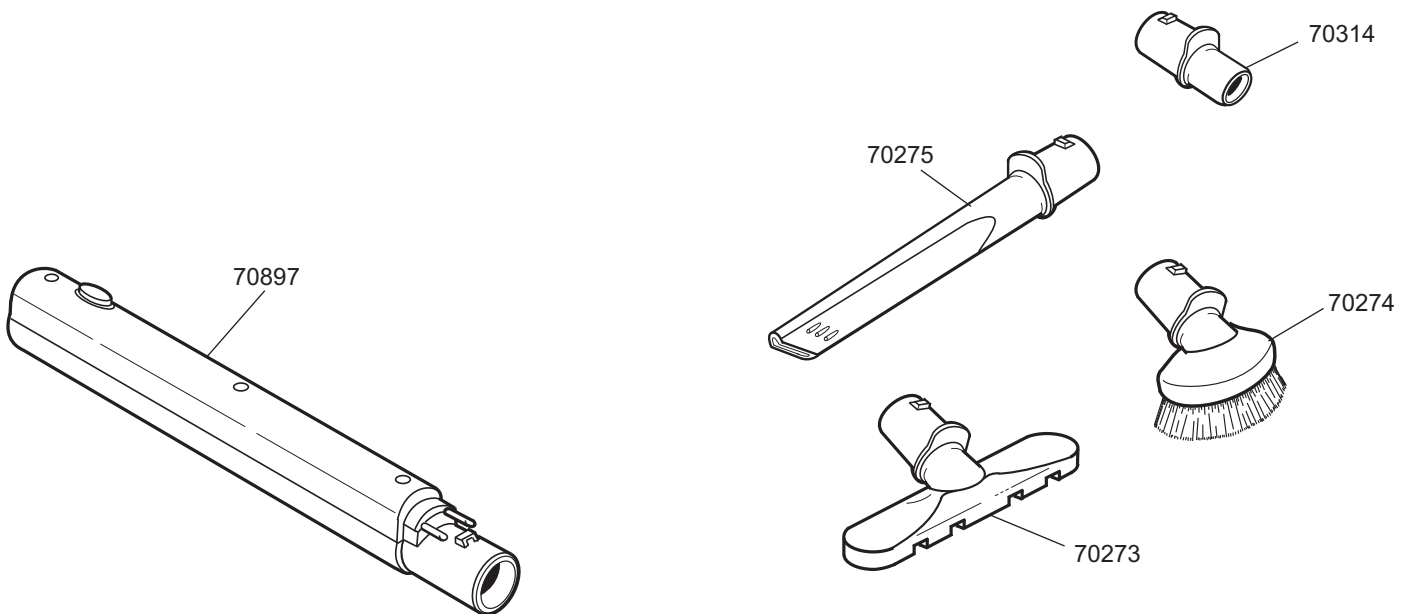
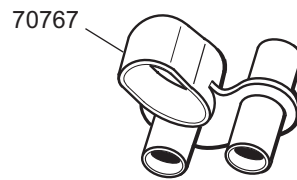
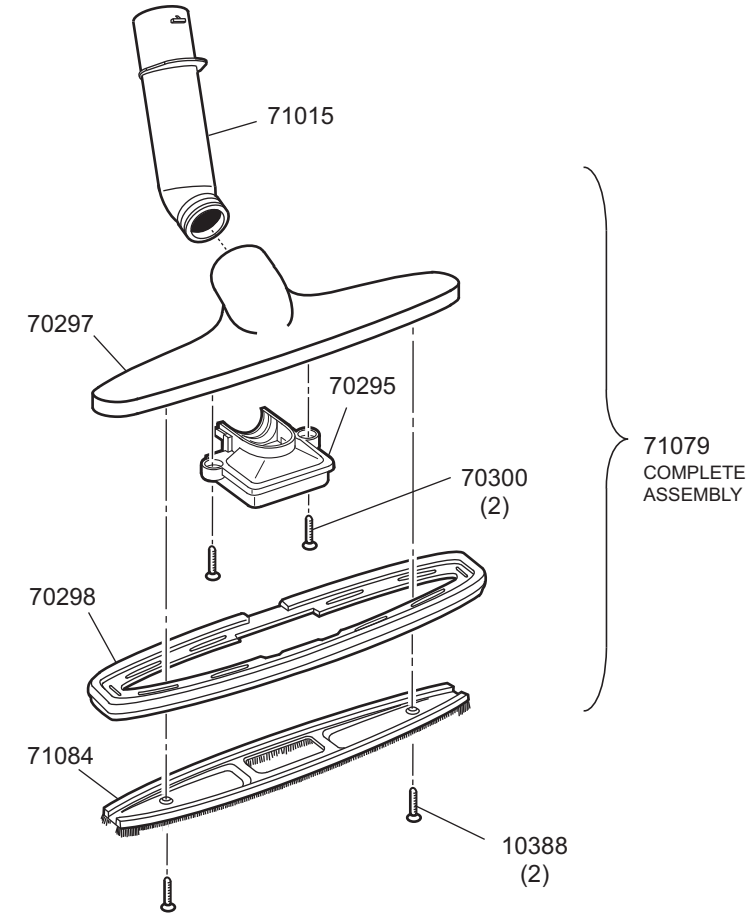
**Order:**

**Number:**

**Description:**

|       |                               |
|-------|-------------------------------|
| 70898 | Hose Assembly - Complete      |
| 70252 | Hose Handle                   |
| 70253 | Hose Handle Cover             |
| 70895 | Handle Latch                  |
| 70894 | Relief Valve                  |
| 70256 | Lead Assembly - White         |
| 70257 | Lead Assembly - Black         |
| 70258 | Lead Assembly - Black         |
| 70541 | Screw Cover                   |
| 70578 | Handle Retainer               |
| 70896 | Latch                         |
| 70262 | Hose Connect Housing - Top    |
| 70263 | Hose Connect Housing - Bottom |
| 70264 | Switch                        |
| 70265 | Pin Terminal                  |
| 70266 | Compression Spring            |
| 45602 | Contact Block                 |
| 46076 | Spring                        |
| 46745 | Screw 4-20 (Torx)             |
| 46746 | Screw (Torx)                  |

# ACCESSORIES

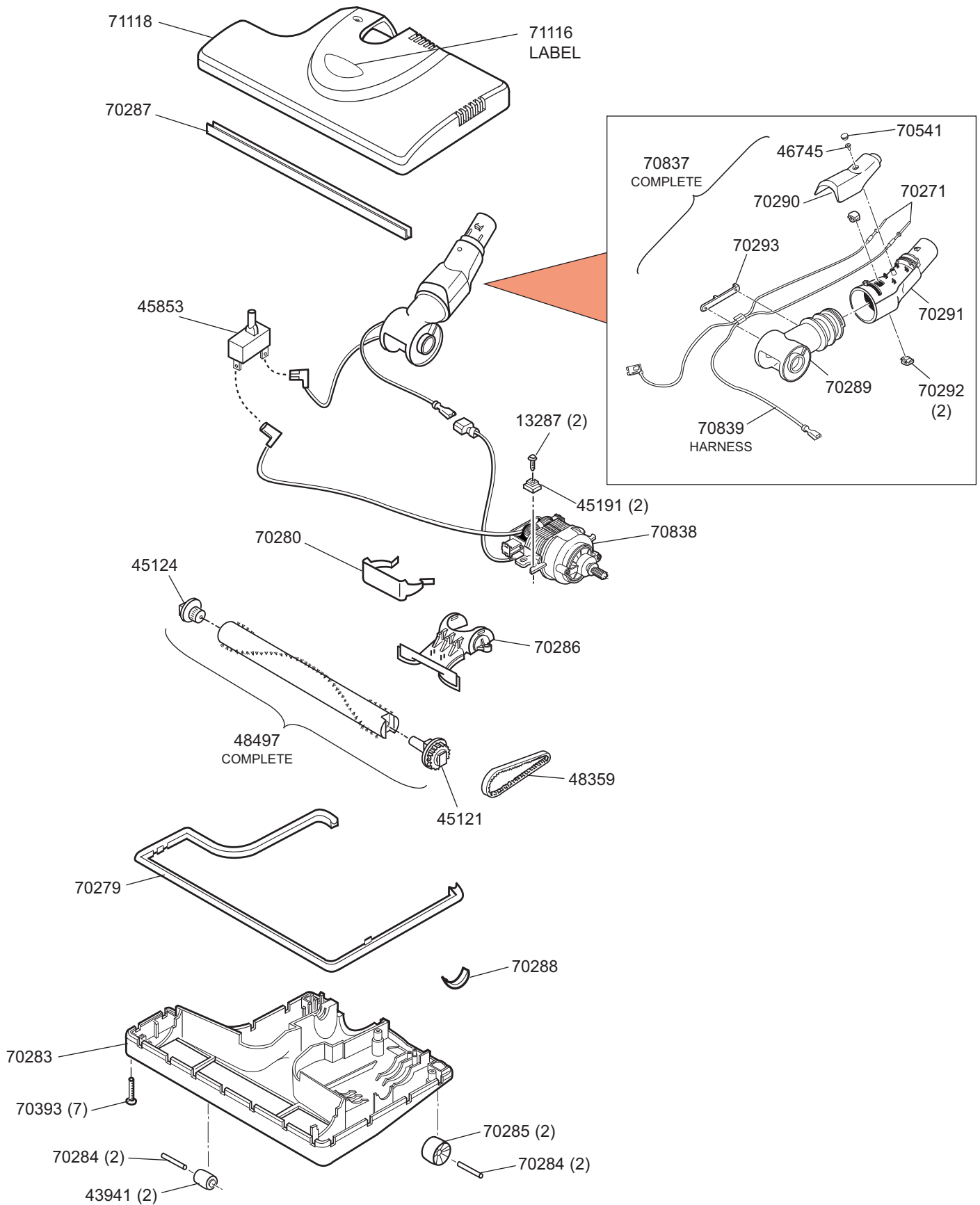




## **ACCESSORIES PARTS LIST**

| <b><u>Order Number:</u></b> | <b><u>Description:</u></b>          |
|-----------------------------|-------------------------------------|
| 70897                       | Wand Assembly - Complete            |
| 71079                       | Floor Tool - Complete               |
| 70273                       | Upholstery Tool                     |
| 70274                       | Dusting Brush                       |
| 70275                       | Crevice Tool                        |
| 70295                       | Collar - Floor Tool                 |
| 71015                       | Elbow - Floor Tool                  |
| 70297                       | Body - Floor Tool                   |
| 70298                       | Bumper - Floor Tool                 |
| 70767                       | Accessory Holder                    |
| 71084                       | Bottom Plate Assembly (W/ Bristles) |
| 70300                       | Screw                               |
| 70314                       | Mini - Vac Adaptor                  |
| 10388                       | Screw                               |

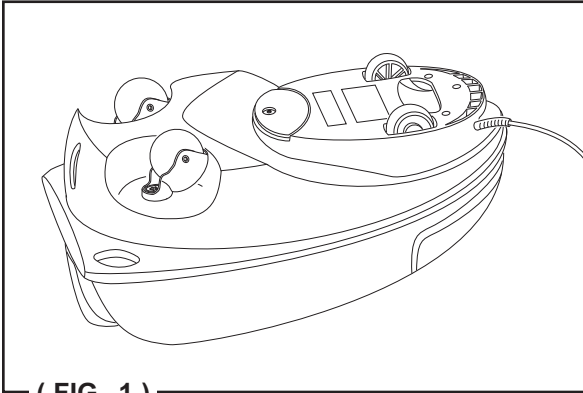
# POWER BRUSH



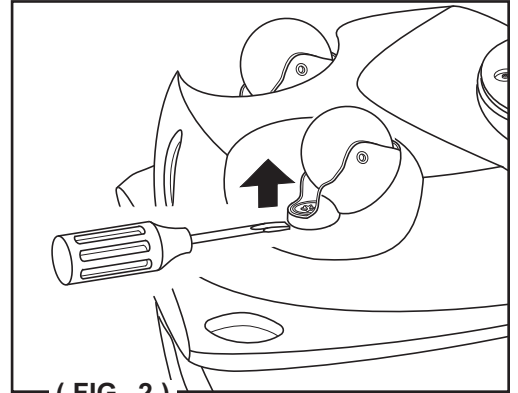
## **POWER BRUSH PARTS LIST**

| <b><u>Order Number:</u></b> | <b><u>Description:</u></b>      |
|-----------------------------|---------------------------------|
| 71117                       | Power Brush Assembly - Complete |
| 70393                       | Screw 8-32 X 1" (Torx)          |
| 70541                       | Screw Cover                     |
| 70271                       | Pin Terminal                    |
| 70839                       | Harness Assembly                |
| 70279                       | Bumper                          |
| 71118                       | Cover (W/ Label)                |
| 48497                       | Roller Brush - Complete         |
| 70283                       | Base                            |
| 70284                       | Axle Pin                        |
| 70285                       | Rear Wheel                      |
| 70286                       | Plenum Cover                    |
| 70287                       | Seal                            |
| 70288                       | Isolator Strip                  |
| 70289                       | Pivot Elbow                     |
| 70290                       | Elbow Cover                     |
| 70291                       | Elbow Body                      |
| 70292                       | Locking Pawl                    |
| 70293                       | Wire Cover                      |
| 70837                       | Elbow Assembly - Complete       |
| 70838                       | Motor Assembly                  |
| 71116                       | Label (Cover)                   |
| 13287                       | Screw                           |
| 48359                       | Belt (3/8" Wide)                |
| 43941                       | Front Roller                    |
| 45121                       | Pulley Assembly                 |
| 45124                       | Roller Brush Bearing            |
| 45191                       | Isolator Grommet                |
| 46745                       | Screw 4-20 (Torx)               |
| 45853                       | Circuit Breaker                 |
| 70280                       | Spring Clip                     |

# CASTER REPLACEMENT



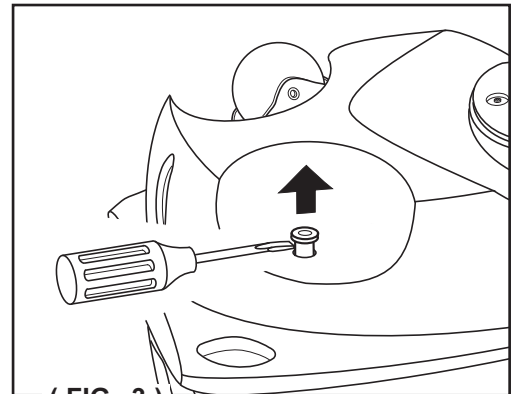
( FIG. 1 )



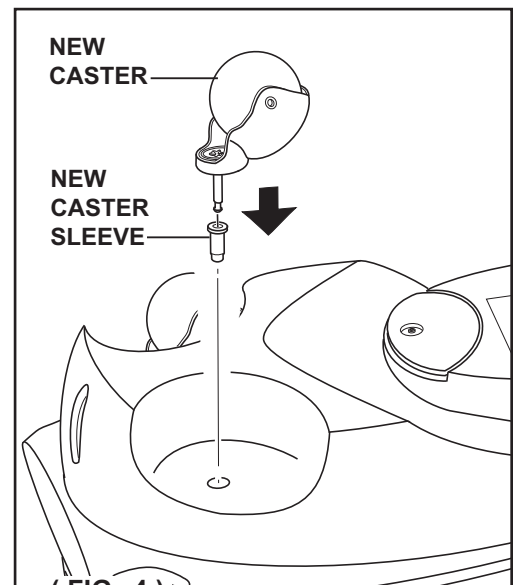
( FIG. 2 )

## REPLACEMENT PROCEDURE

1. **REMOVING CASTER:** Turn machine over onto its top, as shown in Figure 1.
2. Using a flat tip screwdriver - pry upward from under *Caster Housing* until shaft of *Caster* is removed from machine (see Figure 2).
3. Again using a flat tip screwdriver - pry upward from under top flange of *Caster Sleeve* until *Sleeve* is removed from machine (see Figure 3).
4. **INSTALL NEW CASTER:** Using both hands, place new *Caster* into new *Caster Sleeve* - place *Sleeve* & *Caster* into hole on machine - press downward until *Caster* is seated in place (see Figure 4).



( FIG. 3 )



( FIG. 4 )